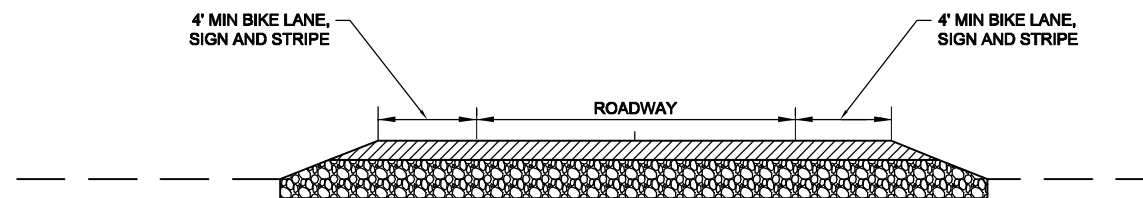
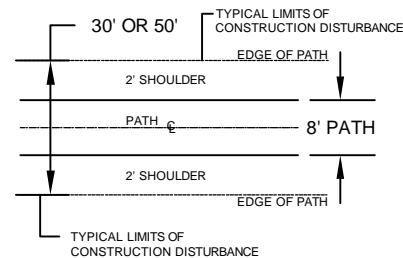
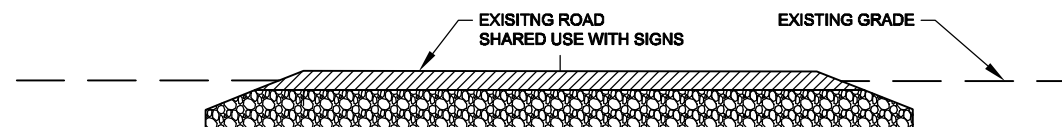
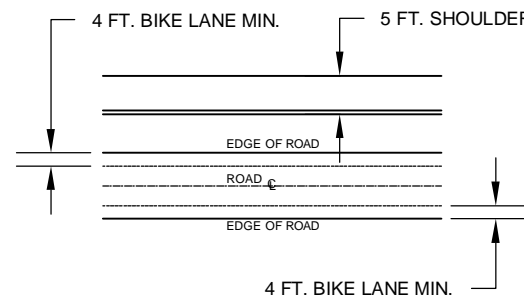


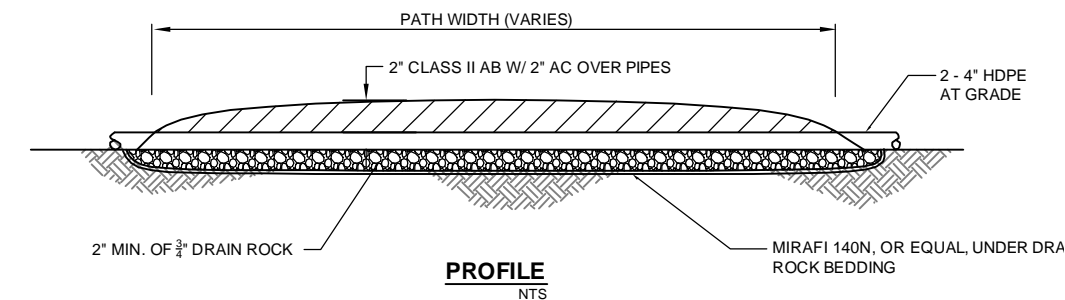
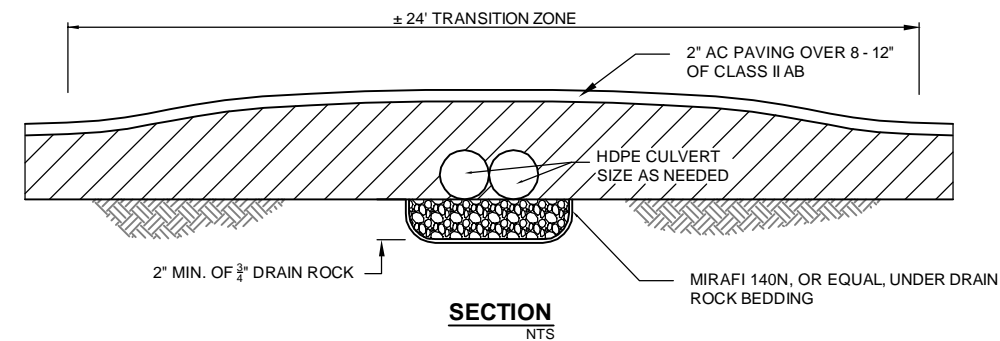
1A CLASS I PATH
NOT TO SCALE



1B PATH ADJACENT TO ROAD SHOULDER
NOT TO SCALE



1C SHARED USE PATH
SHARED USE OF ROAD
NOT TO SCALE



NOTE: ENGINEER TO FIELD LOCATE AS NEEDED

2 TRAIL DRAINAGE CULVERT

BOB JONES PATHWAY
SAN LUIS OBISPO TO ONTARIO ROAD



MORRO GROUP, INC.
Environmental Services



DESIGN	
DRAWN	BJV
CHECKED	
APPR'D	
DATE	03/31/2010
PROJECT NUMBER	250083

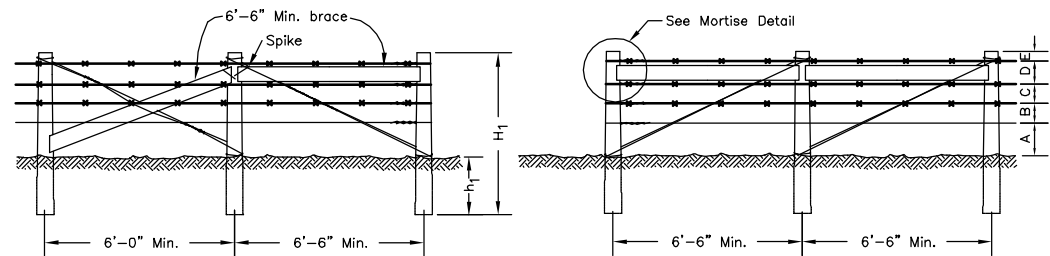
QUESTA
ENGINEERING CORP.
Civil Environmental & Water Resources
(510) 236-6114
FAX (510) 236-2423
questa@questaec.com
P.O. Box 70356 1220 Brickyard Cove Road Point Richmond, CA 94807

DETAILS

SHEET

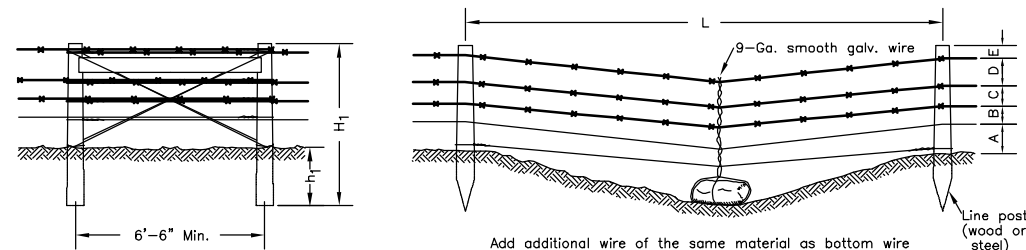
1 OF 6

IF BAR DOES NOT EQUAL 1 INCH DRAWING IS NOT TO SCALE - ADJUST ACCORDINGLY



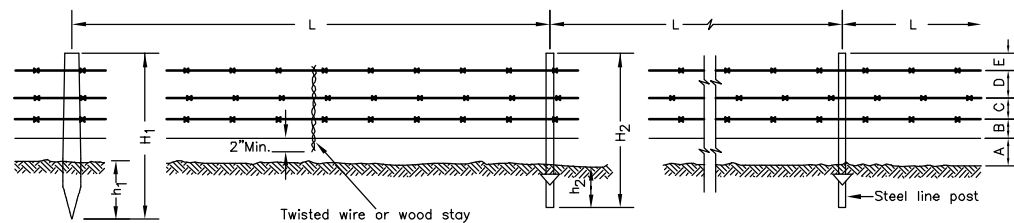
END PANEL-TYPE I

END PANEL-TYPE II



STRESS PANEL

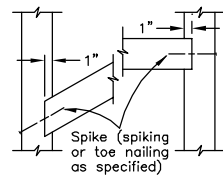
PANEL AT MINOR DEPRESSION



LINE PANELS

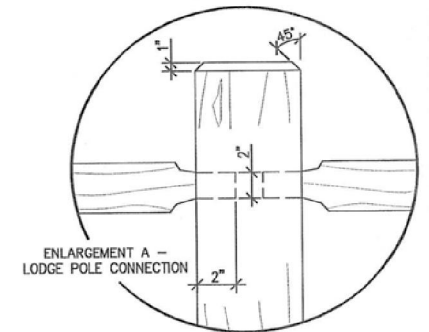
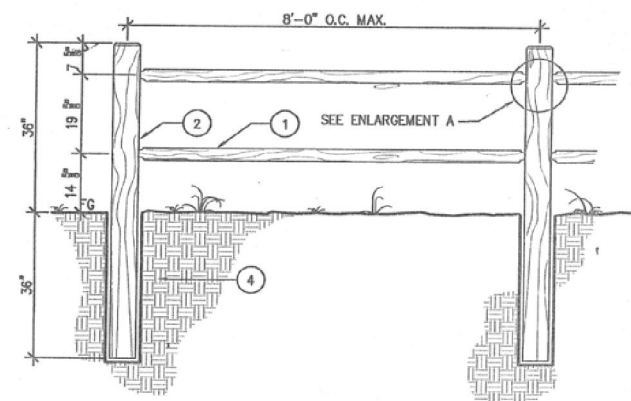
NOTES:

1. USE BARBLESS WIRE (TYP ALL)
2. WIRE TO BE AT 12" SPACING
3. SEE SPECIFICATIONS FOR THE FOLLOWING:
 - A. RATIO OF STEEL TO WOOD LINE POSTS.
 - B. POST SPACING, LENGTH AND DEPTH IN GROUND.
 - C. TYPE OF END PANEL TO BE USED.
 - D. TYPE OF WIRE TO BE USED.
 - E. SPACING BETWEEN WIRES
 - F. NUMBER OF STAYS PER SPAN (L).
4. ALL FENCING TO BE CONSISTENT WITH PROPERTY OWNER NEGOTIATIONS



MORTISE DETAIL

Lodge Pole Fence Detail



LEGEND:

- 1 3" DIAMETER LODGE POLE.
- 2 4" DIAMETER CCQ TREATED PEELER POST.
- 3 NOT USED
- 4 COMPACTED NATIVE SOIL BACKFILL

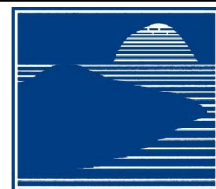


Fencing. A multi use trail should be divided with appropriate fencing. Two rail split rail fencing 3 feet high is recommended.

3 48" T-POST WIRE FENCE
NOT TO SCALE

4 SPLIT RAIL FENCE
NOT TO SCALE

BOB JONES PATHWAY
SAN LUIS OBISPO TO ONTARIO ROAD



MORRO GROUP, INC.
Environmental Services



DESIGN	
DRAWN	BJV
CHECKED	
APPRD	
DATE	03/31/2010
PROJECT NUMBER	250083

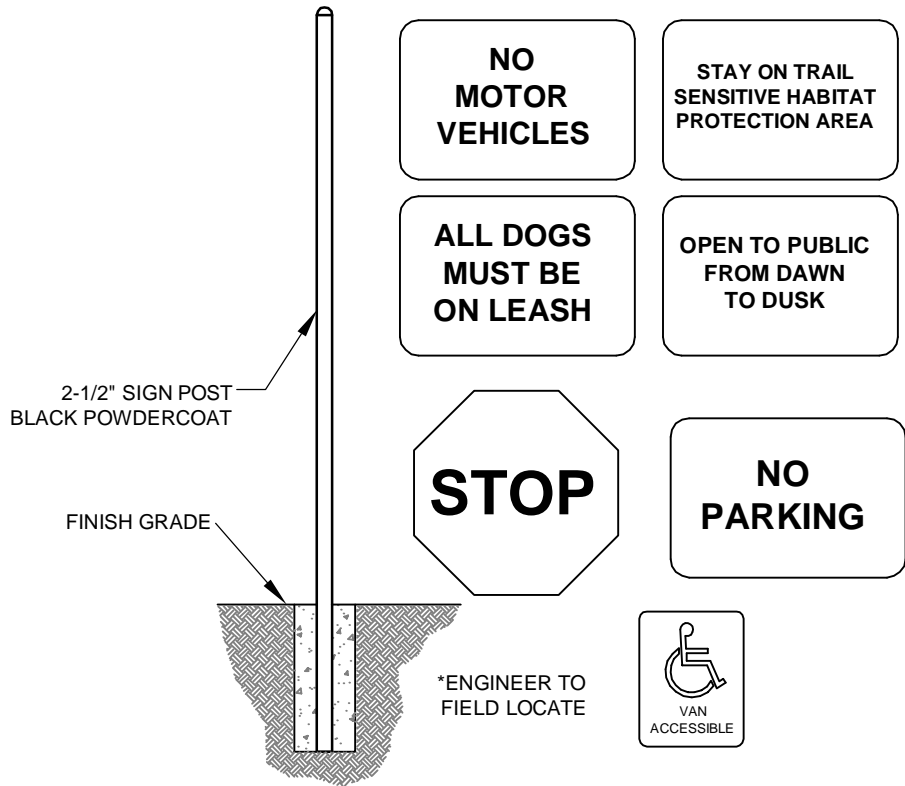
QUESTA
ENGINEERING CORP.
Civil Environmental & Water Resources
(510) 238-6114
FAX (510) 238-2423
questa@questaec.com
P.O. Box 70356 1220 Brickyard Cove Road Point Richmond, CA 94807

DETAILS

SHEET

2 OF 6

IF BAR DOES NOT EQUAL 1 INCH DRAWING IS NOT TO SCALE - ADJUST ACCORDINGLY



Signage. Bike Trail signs should have 2 feet minimum lateral clearance from the edge of the path. The bottom of signs should be at least 7 feet above the trail. The signs should demonstrate the separation between bicycle and pedestrian use, if applicable.

MULTIPLE USE TRAIL GUIDELINES
TRAIL COURTESY & SAFETY ARE YOUR RESPONSIBILITY!

ALL USERS:

- Observe rules & regulations
- Stay on designated trails
- Be alert and watch for others
- Minimize your impact
- Avoid muddy areas



- Ride on open trails only
- Leave no trace
- Control your horse
- Assess rider's trail
- Speed capabilities
- Plan trail
- Control your horse
- Avoid cross-country riding
- Yield trail to equitation
- Allow equestrian and hikers to pass
- Don't do so inclined

5 TYPICAL TRAIL SIGNS

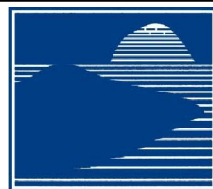
NOT TO SCALE
SOURCE: SAN LUIS OBISPO COUNTY



6 BENCH

NOT TO SCALE
PILOT ROCK BENCH
MODEL PWRB/G-6CO OR MODEL OWRB/P/B-6TP OR EQUAL
INSTALL PER MANUFACTURER'S RECOMMENDATIONS

BOB JONES PATHWAY
SAN LUIS OBISPO TO ONTARIO ROAD



MORRO GROUP, INC.
Environmental Services



DESIGN	
DRAWN	BJV
CHECKED	
APPR'D	
DATE	03/31/2010
PROJECT NUMBER	250083

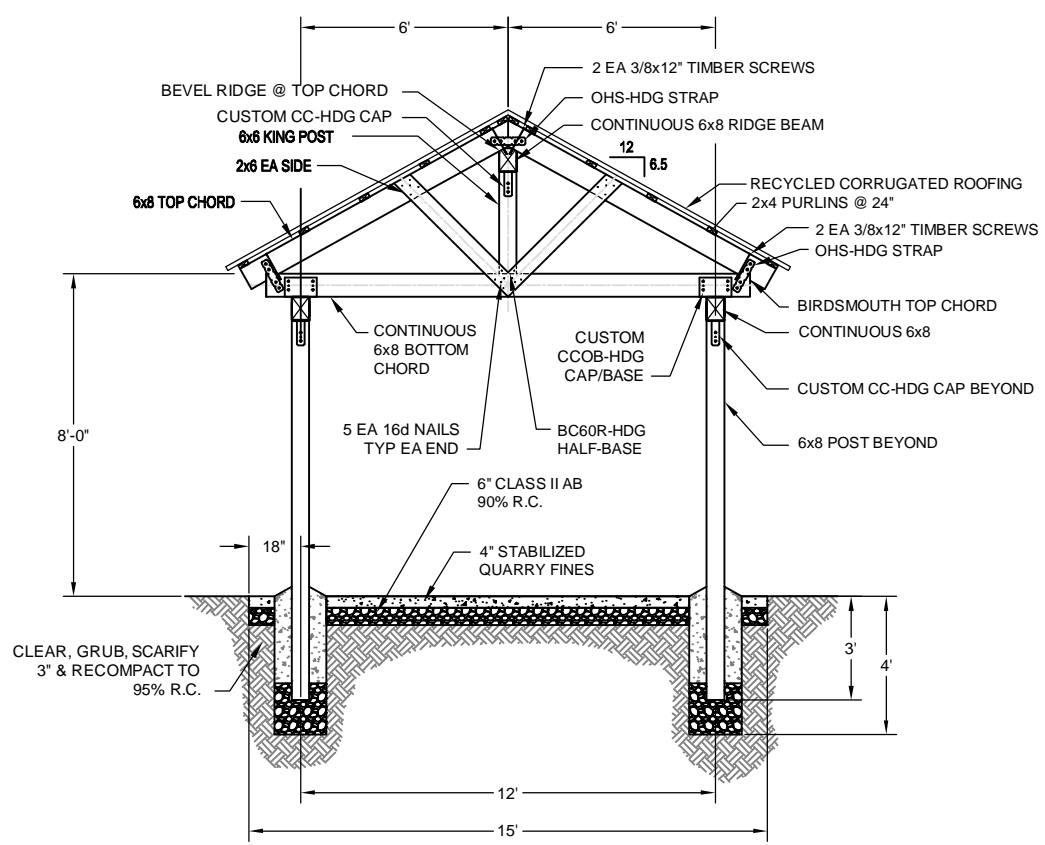
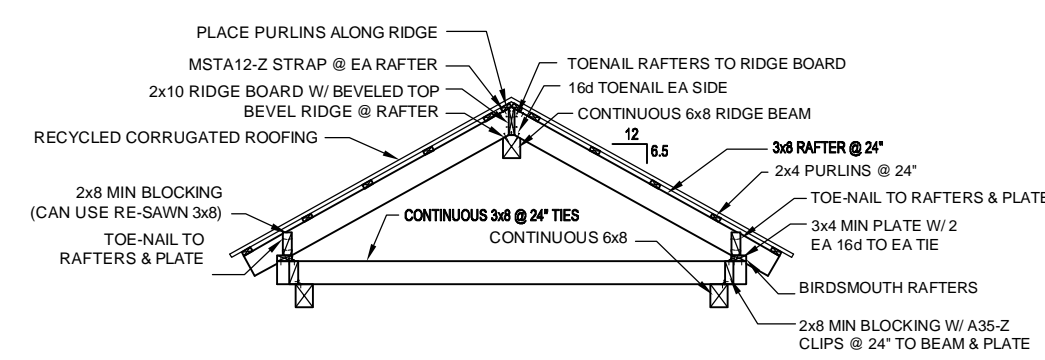
QUESTA Engineering Corp.
Civil Environmental & Water Resources
(510) 236-6114
FAX (510) 236-2423
questa@questaec.com
P.O. Box 70356 1220 Brickyard Cove Road Point Richmond, CA 94807

DETAILS

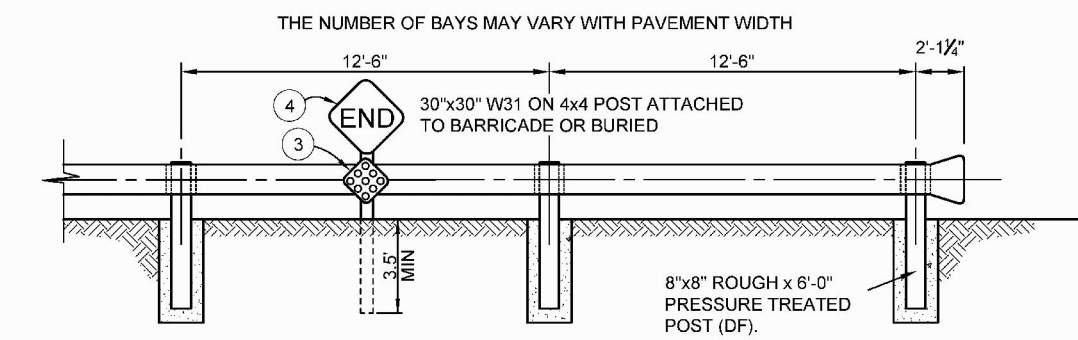
SHEET

3 OF 6

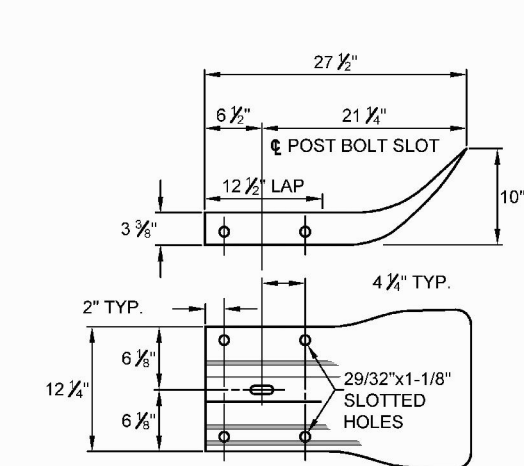
IF BAR DOES NOT EQUAL 1 INCH DRAWING IS NOT TO SCALE - ADJUST ACCORDINGLY



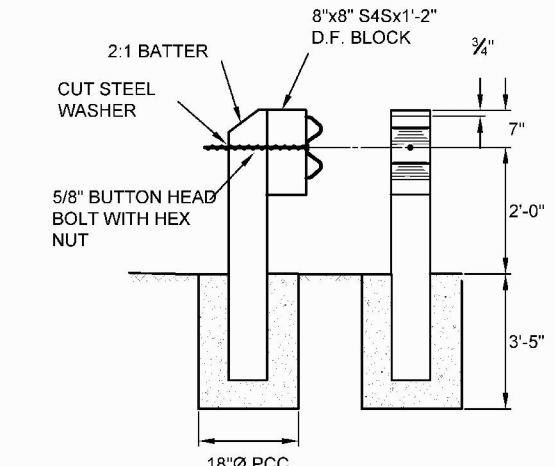
7 TRAILHEAD ENTRY STRUCTURE
NOT TO SCALE



METAL BEAM BARRICADE



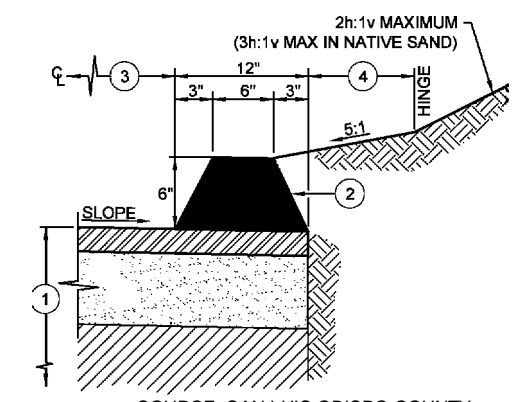
TERMINAL SECTION



POST DETAIL

SOURCE: SAN LUIS OBISPO COUNTY. ALL TRAFFIC BARRIERS TO BE CONSISTENT WITH CALTRANS REQUIREMENTS

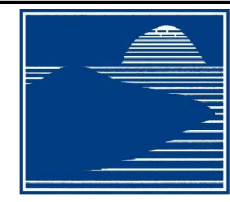
8 TRAFFIC BARRIER
NOT TO SCALE



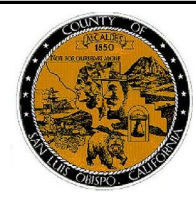
SOURCE: SAN LUIS OBISPO COUNTY

9 AC CURB
NOT TO SCALE

BOB JONES PATHWAY
SAN LUIS OBISPO TO ONTARIO ROAD



MORRO GROUP, INC.
Environmental Services



DESIGN	
DRAWN	BJV
CHECKED	
APPRD	
DATE	03/31/2010
PROJECT NUMBER	250083

QUESTA ENGINEERING CORP.

Civil Environmental & Water Resources

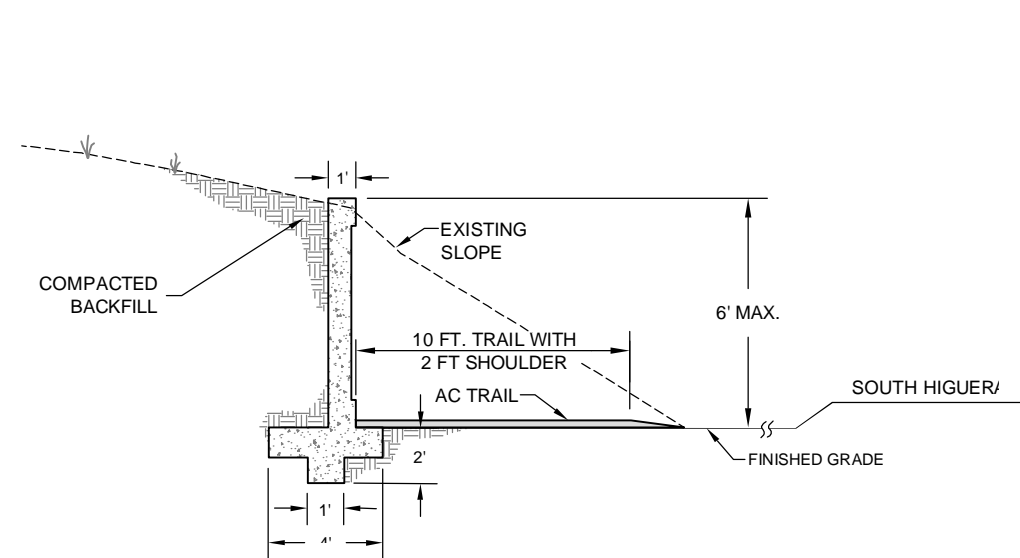
(510) 236-6114
FAX (510) 236-2423
questa@questaec.com

P.O. Box 70356 1220 Brickyard Cove Road Point Richmond, CA 94807

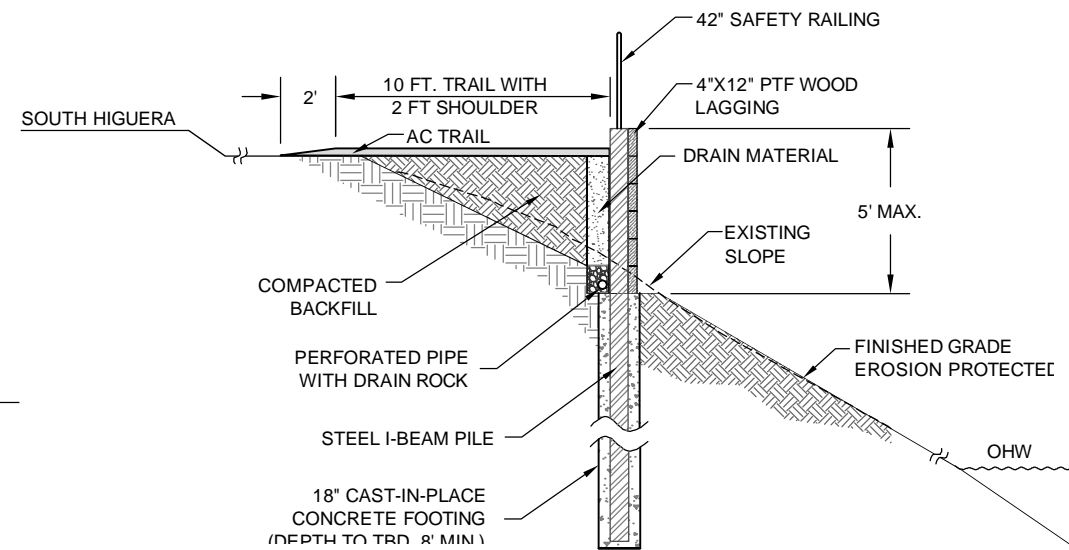
DETAILS

SHEET
4 OF 6

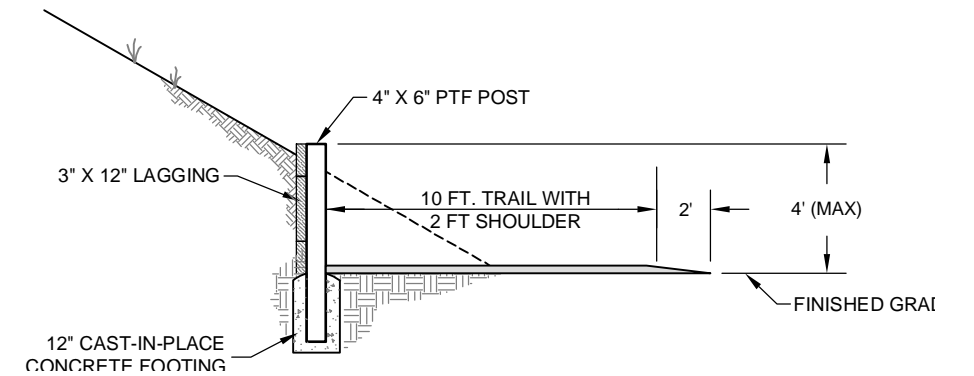
IF BAR DOES NOT EQUAL 1 INCH DRAWING IS NOT TO SCALE - ADJUST ACCORDINGLY



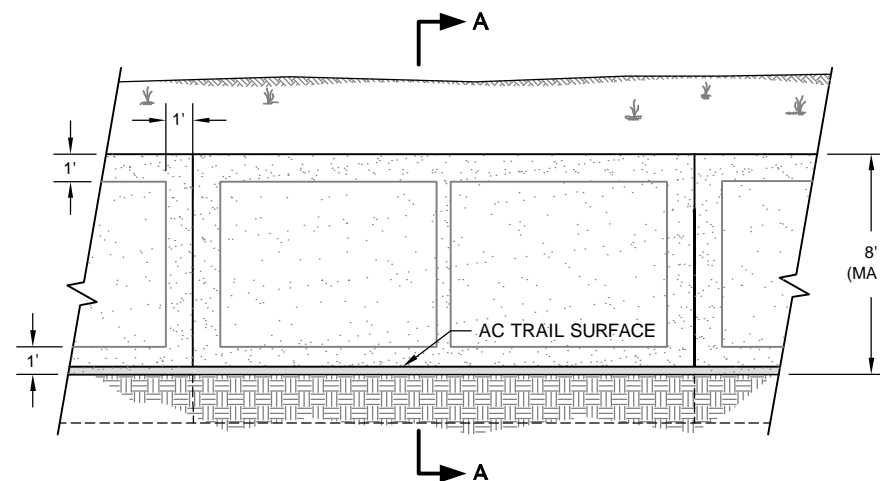
RETAINING WALL SECTION A-A AT SOUTH HIGUERA NEAR OCTAGON BARN



RETAINING WALL SECTION B-B AT SOUTH HIGUERA NEAR CLOVERIDGE LANE

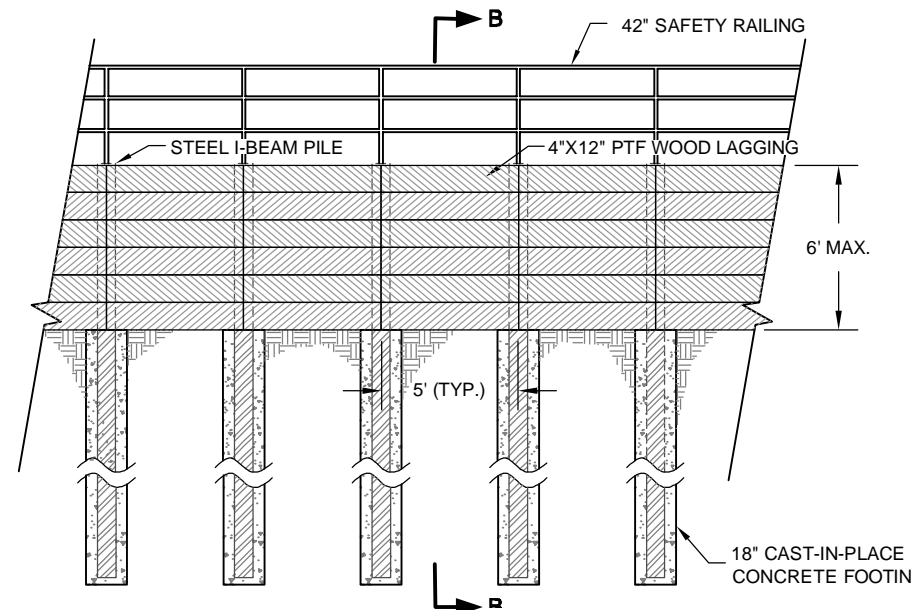


RETAINING WALL SECTION C-C AT THE NARROWS NORTH OF BARON CANYON



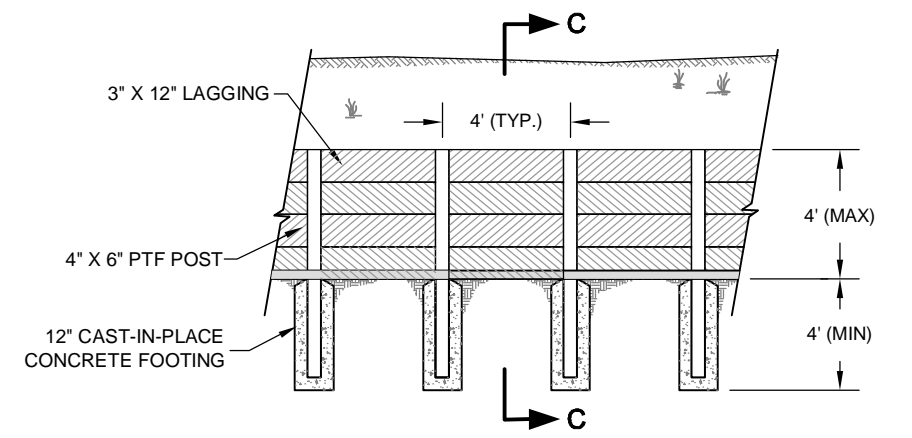
RETAINING WALL ELEVATION

10 CONCRETE RETAINING WALL
NOT TO SCALE



RETAINING WALL ELEVATION

11 SOLDIER PILE RETAINING WALL
NOT TO SCALE



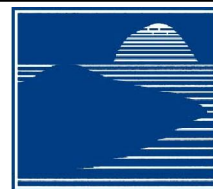
RETAINING WALL ELEVATION

12 WOOD RETAINING WALL
NOT TO SCALE

ABBREVIATIONS

AB - AGGREGATE BASE ROCK
AC - ASPHALT CONCRETE
PTF - PRESSURE TREATED FIR
PCC - PORTLAND CEMENT CONCRETE
TBD - TO BE DETERMINED (ESTIMATED DEPTH PROVIDED)
OHW - ORDINARY HIGH WATER

BOB JONES PATHWAY
SAN LUIS OBISPO TO ONTARIO ROAD



MORRO GROUP, INC.
Environmental Services



DESIGN
DRAWN BJV
CHECKED
APPRD
DATE 03/31/2010
PROJECT NUMBER 250083

QUESTA
ENGINEERING CORP.

(510) 236-6114
FAX (510) 236-2423
QUESTA@QUESTAEC.COM
P.O. Box 70356 1220 Brickyard Cove Road Point Richmond, CA 94807

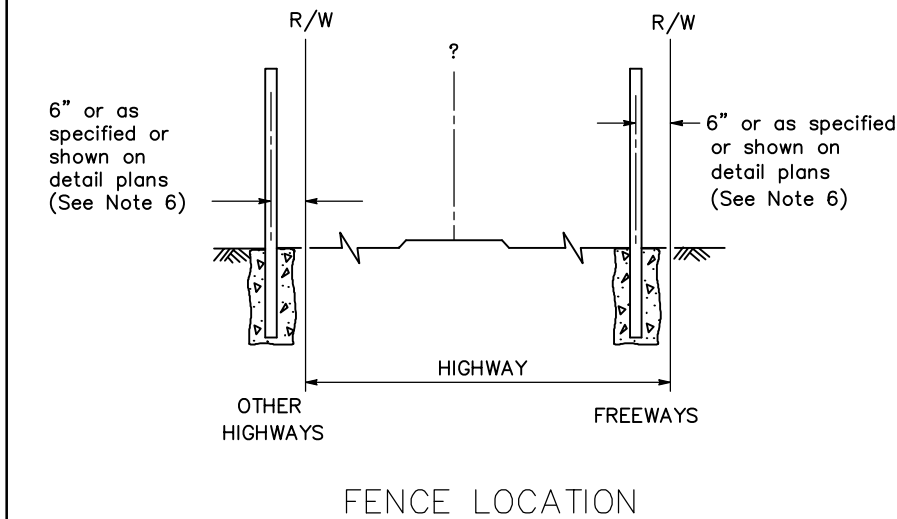
Civil
Environmental
& Water Resources






DETAILS

SHEET

5 OF 6

IF BAR DOES NOT EQUAL 1 INCH DRAWING IS NOT TO SCALE - ADJUST ACCORDINGLY



TYPICAL MEMBER DIMENSIONS (See Notes)										
FENCE HEIGHT	LINE POSTS			END, LATCH & CORNER POSTS			BRACES			
	ROUND ID	H	ROLL FORMED	ROUND ID	ROLL FORMED		ROUND ID	H	ROLL FORMED	
						 				
6' & less	1?"	1?" x 1?"	1?" x 1?"	2"	3?" x 3?"	2" x 1?"	1?"	1?" x 1?"	1?" x 1?"	1?" x 1?"
Over 6'	2"	2?" x 2"	2" x 1?"	2?"	3?" x 3?"	2?" x 2?"	1?"	1?" x 1?"	1?" x 1?"	1?" x 1?"

1. The above table shows examples of post and brace sections which may comply with the Specifications.
2. Sections shown in the tables must also comply with the strength requirements and other provisions of the Specifications.
3. Other sections which comply with the strength requirements and other provisions of the Specifications may be used on approval of the Engineer.
4. Options exercised shall be uniform on any one project.
5. Dimensions shown are nominal.
6. Offset to be 2'-0" at monument locations, measured at right angles to R/W lines. Taper to achieve offset to be at least 20'-0" long.

GATE POST			
FENCE HEIGHT	GATE 4. WIDTHS	NOMINAL ID	WEIGHT PER FOOT
6'-0" and Less	Up thru 6'-0"	2?"	4.95 LB
	Over 6'-0" thru 12'-0"	4"	10.79 LB
	Over 12'-0" thru 18'-0"	5"	14.62 LB
	Over 18'-0" to 24'-0" Max	6"	18.97 LB
Over 6'-0"	Up thru 6'-0"	3"	7.58 LB
	Over 6'-0" thru 12'-0"	5"	14.62 LB
	Over 12'-0" thru 18'-0"	6"	18.97 LB
	Over 18'-0" to 24'-0" Max	8"	28.55 LB

Above post dimensions and weights are minimums.
Larger sizes may be used on approval of the
Engineer.



MORRO
GROUP, INC.
Environmental Services



DESIGN	
DRAWN	BJV
CHECKED	
APPR'D	
DATE	03/31/2010
PROJECT NUMBER	250083

Civil
 Environmental
 & Water Resources



QUESTA
ENGINEERING CORP.

(510) 236-6114
 FAX (510) 236-2423
questa@questaec.com

P.O. Box 70356 1220 Brickyard Cove Road Point Richmond, CA 94801

DETAILS	SHEET
	6 OF 6

IF BAR DOES NOT EQUAL 1 INCH DRAWING IS NOT TO SCALE - ADJUST ACCORDINGLY