

BOB JONES PATHWAY  
SAN LUIS OBISPO TO ONTARIO ROAD

**QUESTA**  
ENGINEERING CORP.  
Civil  
Environmental  
& Water Resources  
(510) 236-6114  
FAX (510) 236-2423  
questa@questaec.com  
P.O. Box 70356 1220 Brickyard Cove Road Point Richmond, CA 94807



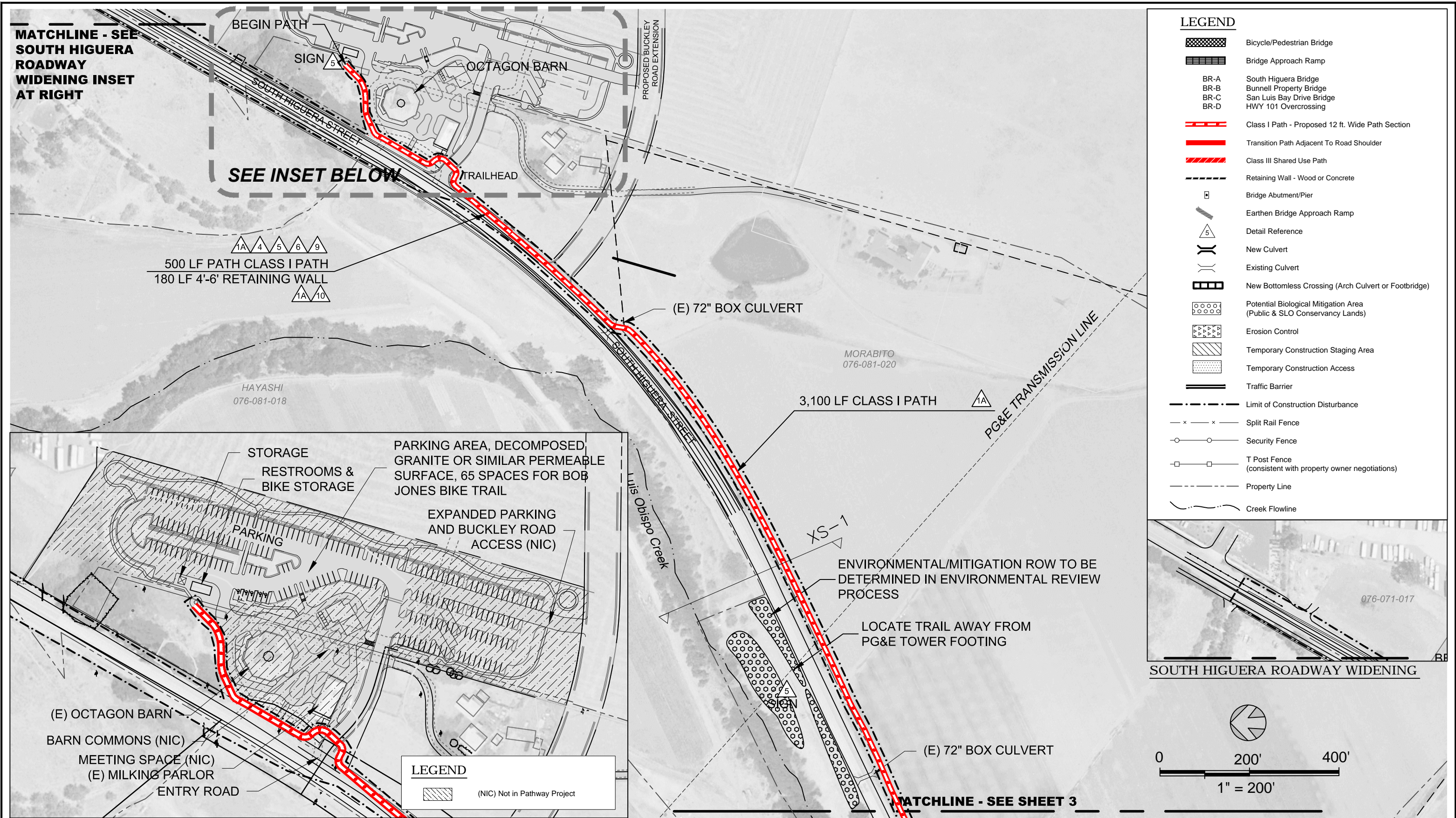
DESIGN	MH/JM
DRAWN	OR
CHECKED	JP
APPR'D	JP
DATE	9/28/15
PROJECT NUMBER	1300177

PRELIMINARY PLAN  
"EIR ALTERNATIVE"

SHEET









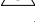


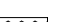

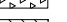
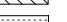



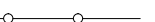




1 of 13



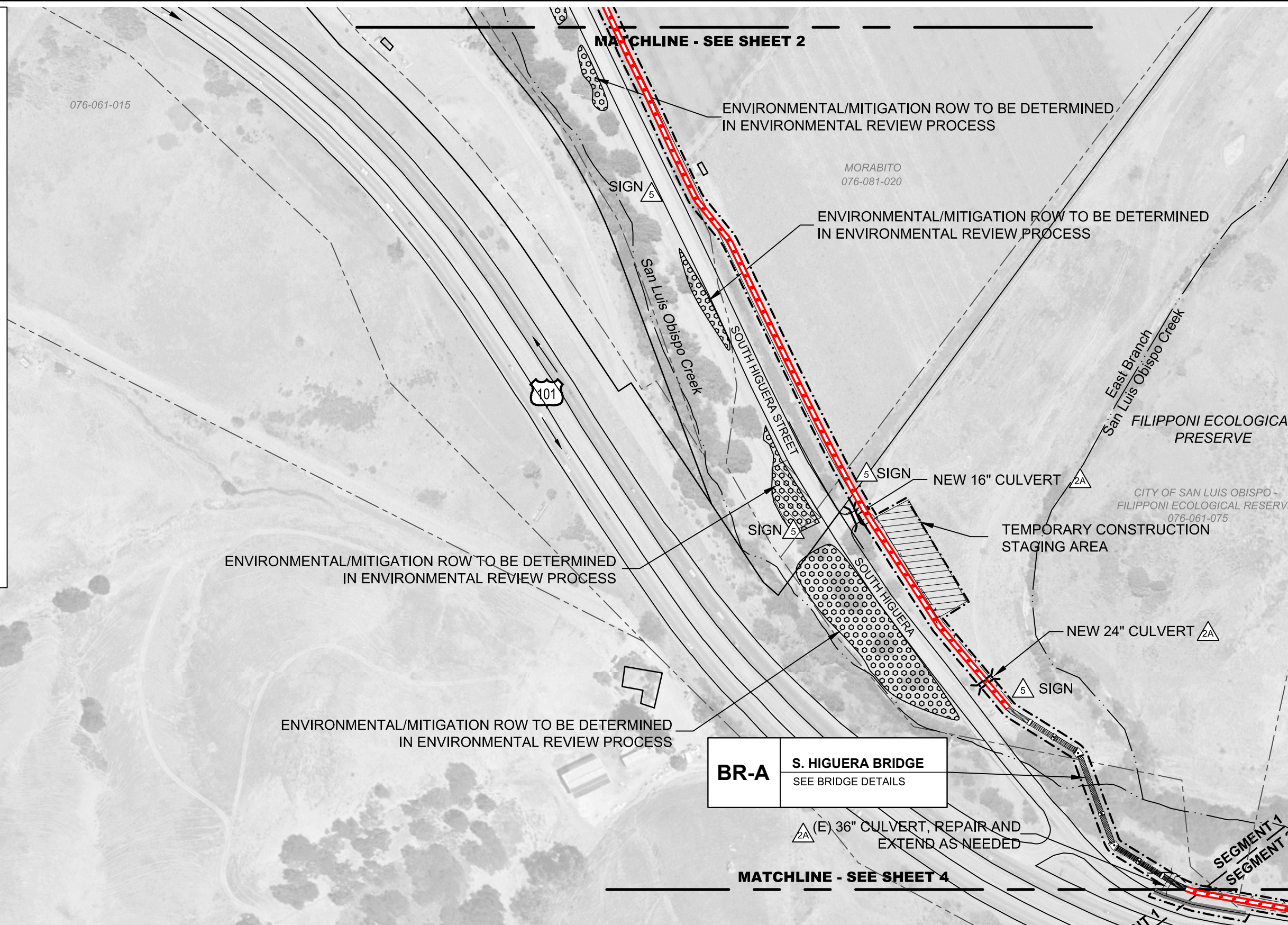
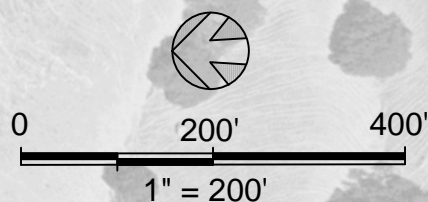




# LEGEND

-  Bicycle/Pedestrian Bridge
-  Bridge Approach Ramp
- BR-A South Higuera Bridge
- BR-B Bunnell Property Bridge
- BR-C San Luis Bay Drive Bridge
- BR-D HWY 101 Overcrossing
-  Class I Path - Proposed 12 ft. Wide Path Section
-  Transition Path Adjacent To Road Shoulder
-  Class III Shared Use Path
-  Retaining Wall - Wood or Concrete
-  Bridge Abutment/Pier
-  Earthen Bridge Approach Ramp
-  Detail Reference
-  New Culvert
-  Existing Culvert
-  New Bottomless Crossing (Arch Culvert or Footbridge)
-  Potential Biological Mitigation Area (Public & SLO Conservancy Lands)
-  Erosion Control
-  Temporary Construction Staging Area
-  Temporary Construction Access
-  Traffic Barrier
-  Limit of Construction Disturbance
-  Split Rail Fence
-  Security Fence
-  T Post Fence (consistent with property owner negotiations)
-  Property Line
-  Creek Flowline

\*(NIC) NOT IN PATHWAY PROJECT



## BOB JONES PATHWAY SAN LUIS OBISPO TO ONTARIO ROAD



Civil  
Environmental  
& Water Resources



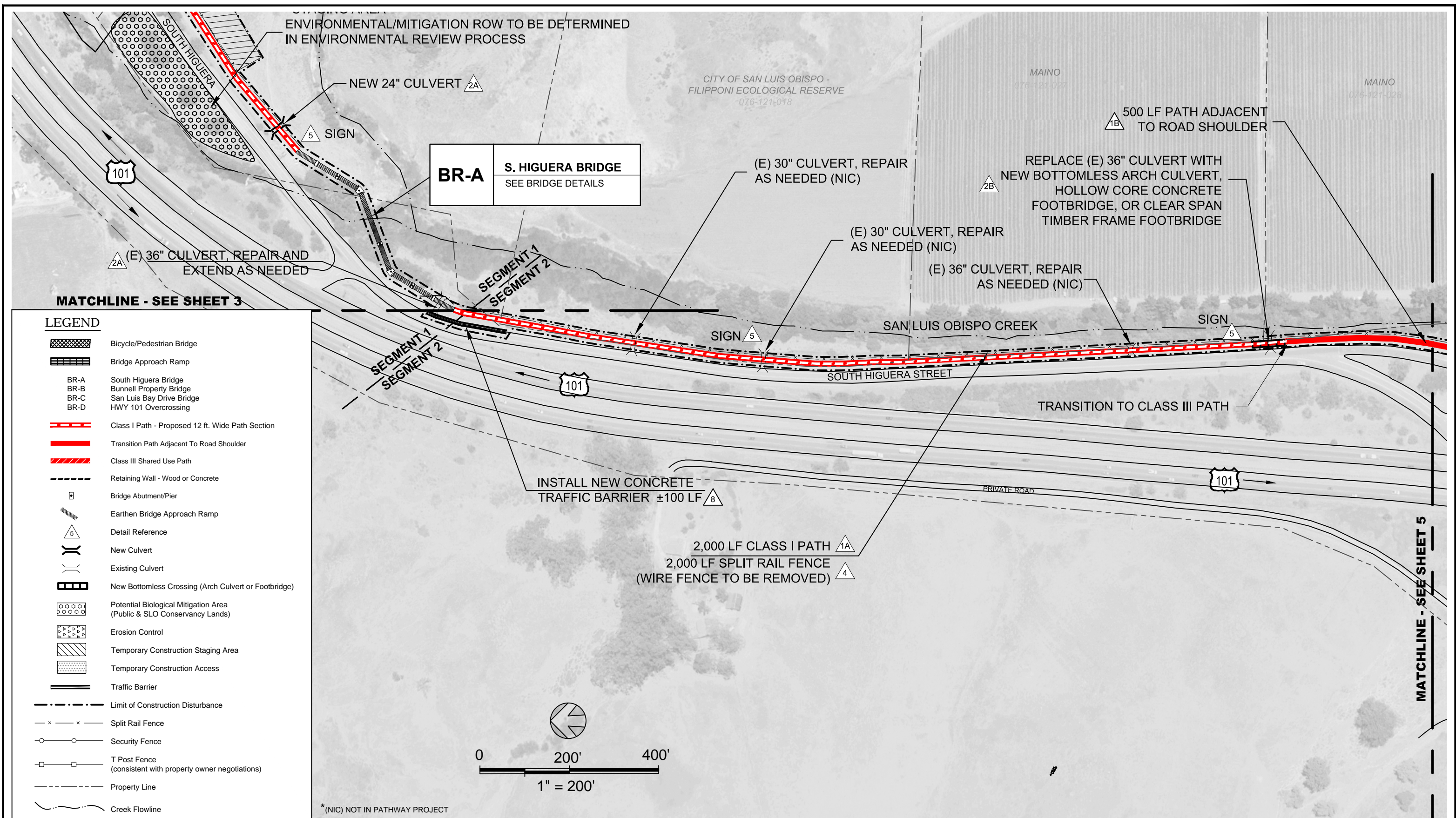
DESIGN	MH/JM
DRAWN	OR
CHECKED	JP
APPR'D	JP
DATE	9/28/15
PROJECT NUMBER	1300177

## PRELIMINARY PLAN "EIR ALTERNATIVE"

SHEET

3 of 13





BOB JONES PATHWAY  
SAN LUIS OBISPO TO ONTARIO ROAD



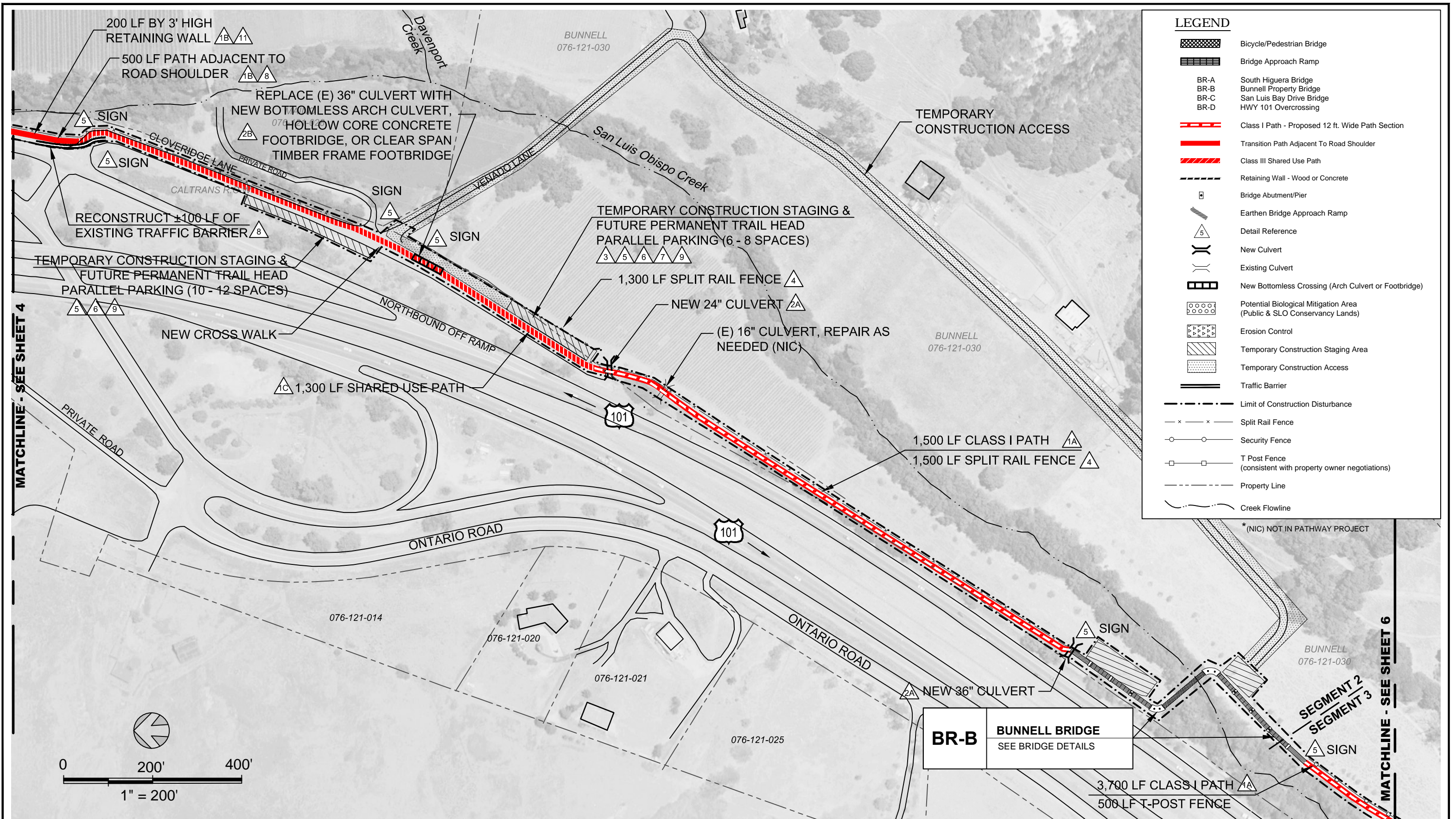
DESIGN	MH/JM
DRAWN	OR
CHECKED	JP
APPR'D	JP
DATE	9/28/15
PROJECT NUMBER	1300177

PRELIMINARY PLAN  
"EIR ALTERNATIVE"

SHEET

4 of 13





**BOB JONES PATHWAY**  
SAN LUIS OBISPO TO ONTARIO ROAD

**QUESTA**  
ENGINEERING CORP.  
Civil  
Environmental  
& Water Resources  
(510) 236-6114  
FAX (510) 236-2423  
questa@questacorp.com  
P.O. Box 70356 1220 Brickyard Cove Road Point Richmond, CA 94807

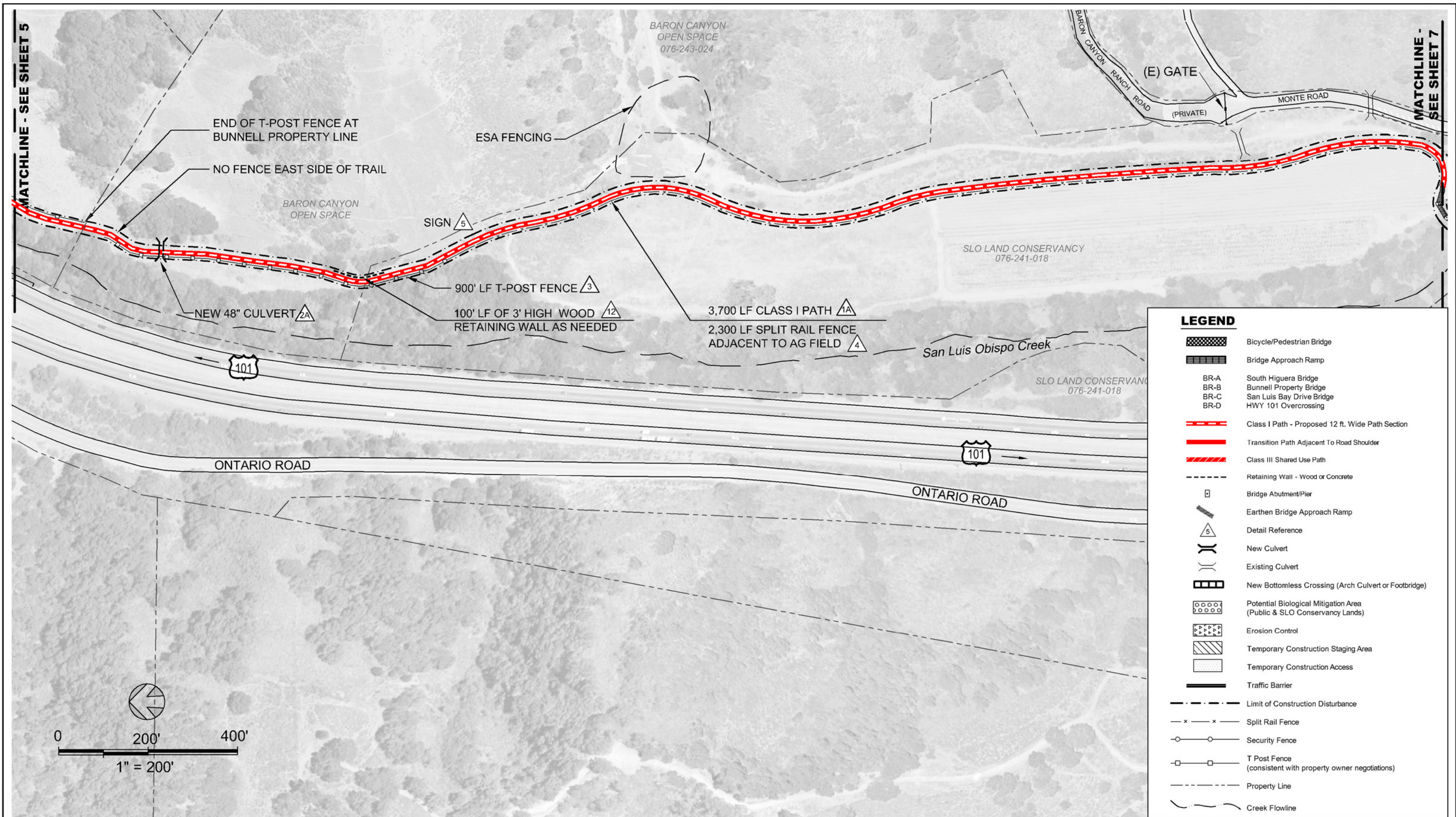


DESIGN	MH/JM
DRAWN	OR
CHECKED	JP
APPR'D	JP
DATE	9/28/15
PROJECT NUMBER	1300177

**PRELIMINARY PLAN**  
**"EIR ALTERNATIVE"**

**SHEET**  
**5 of 13**





**BOB JONES PATHWAY**  
**SAN LUIS OBISPO TO ONTARIO ROAD**

**QUESTA**  
ENGINEERING CORP.

Civil  
Environmental  
& Water Resources

(510) 236-6114  
 FAX (510) 236-2423  
 questa@questaec.com

P.O. Box 70356 1220 Brickyard Cove Road Point Richmond, CA 94807



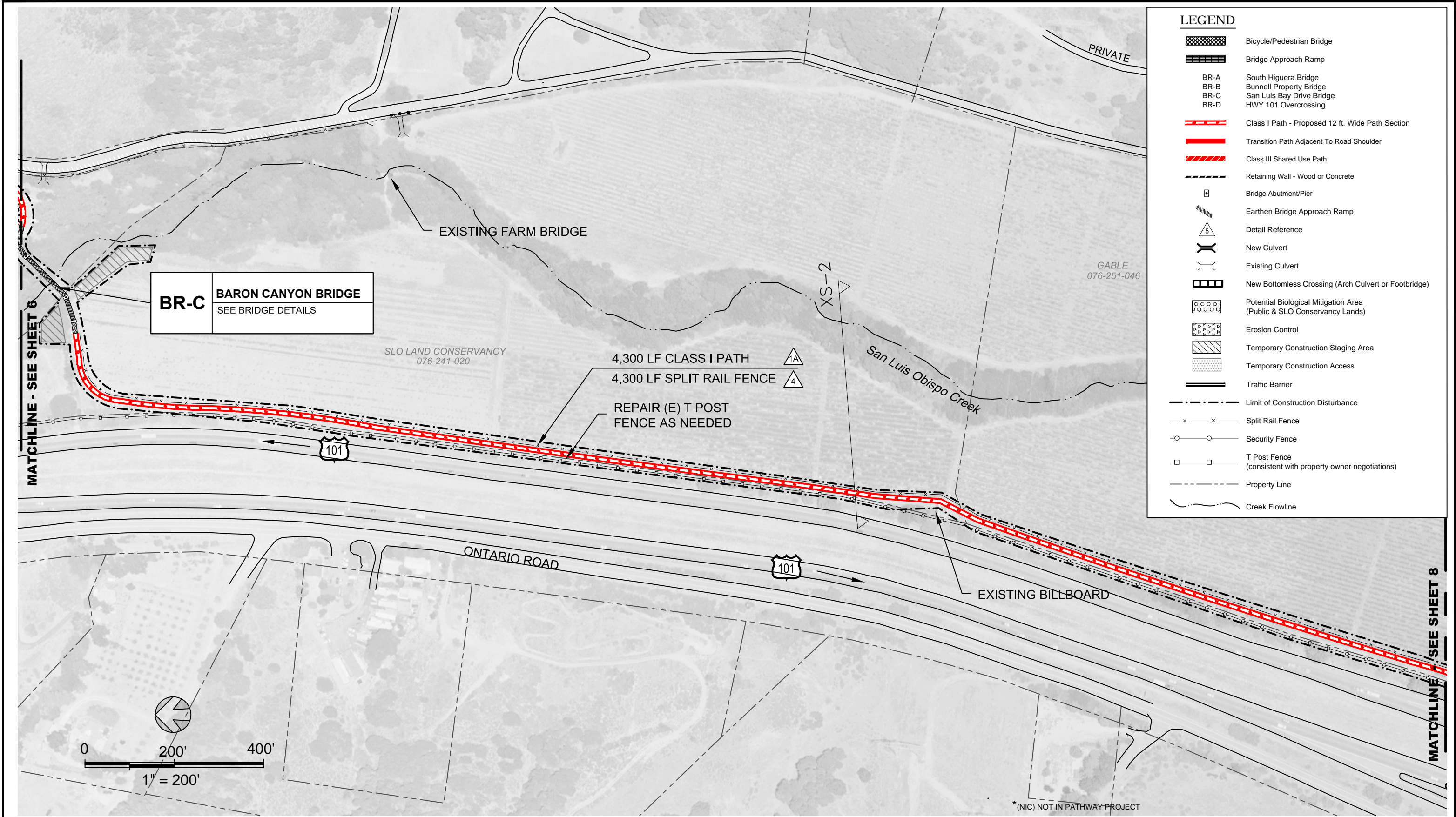
DESIGN	MH/JM
DRAWN	OR
CHECKED	JP
APPRD	JP
DATE	9/28/15
PROJECT NUMBER	1300177

**PRELIMINARY PLAN**  
**"EIR ALTERNATIVE"**

**SHEET**

**6 of 13**





BOB JONES PATHWAY

SAN LUIS OBISPO TO ONTARIO ROAD

QUESTA

ENGINEERING CORP.

Civil  
Environmental  
& Water Resources

(510) 236-6114  
FAX (510) 236-2423  
questa@questaec.com

P.O. Box 70356 1220 Brickyard Cove Road Point Richmond, CA 94807

COUNTY OF  
SAN LUIS OBISPO  
CALIFORNIA

DESIGN MH/JM  
DRAWN OR  
CHECKED JP  
APPR'D JP  
DATE 9/28/15  
PROJECT NUMBER 1300177

PRELIMINARY PLAN

"EIR ALTERNATIVE"

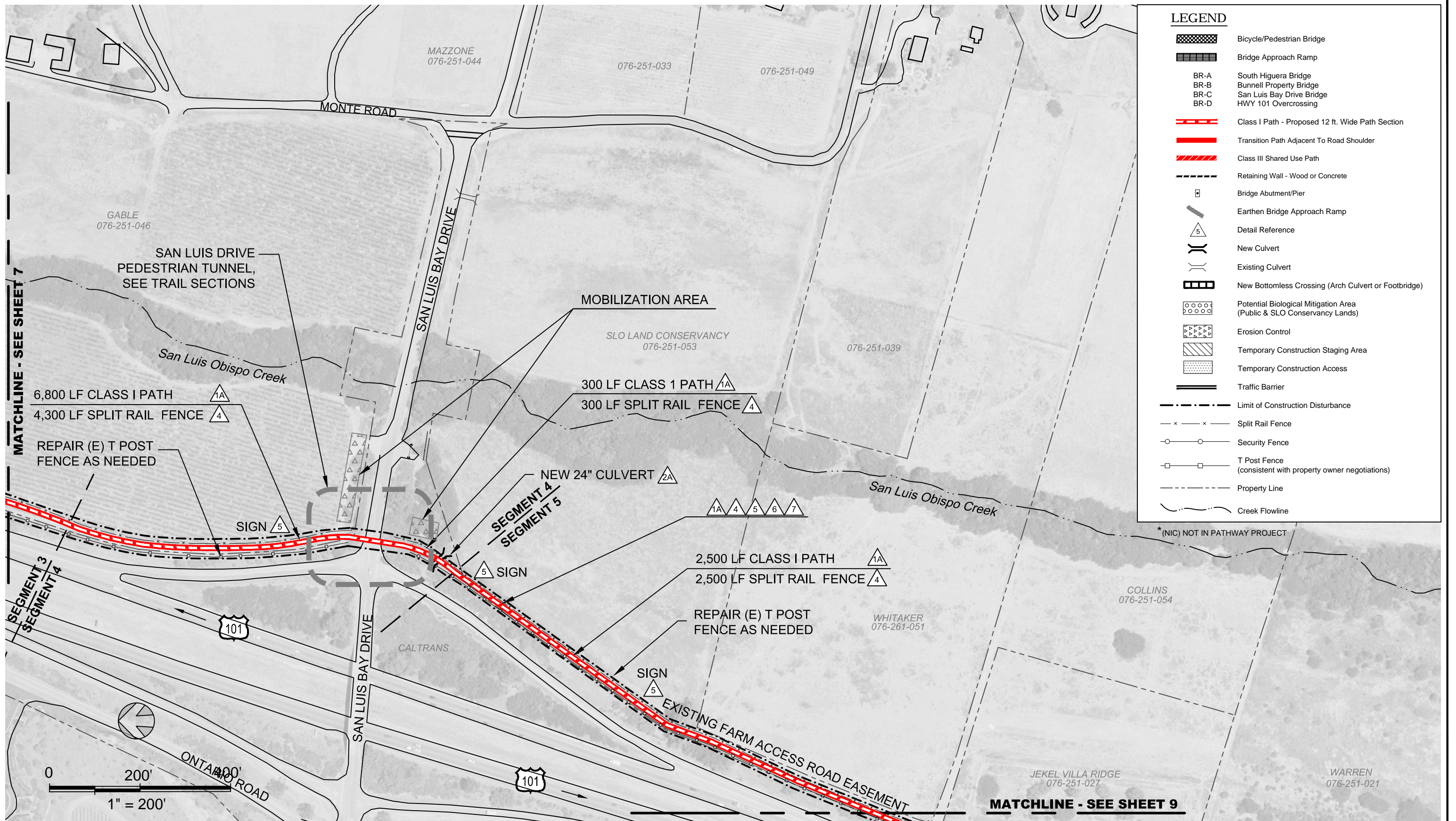
SHEET

7 of 13

FILE: P:\2013\1300177\_BOB\_JONES\_2013\CAD\1300177\_PREFERRED\_ALIGNMENT\_9-28-15.DWG

IF BAR DOES NOT EQUAL 1 INCH DRAWING IS NOT TO SCALE - ADJUST ACCORDINGLY





LEGEND

- Bicycle/Pedestrian Bridge
- Bridge Approach Ramp
- BR-A South Higuera Bridge
- BR-B Bunnell Property Bridge
- BR-C San Luis Bay Drive Bridge
- BR-D HWY 101 Overcrossing
- Class I Path - Proposed 12 ft. Wide Path Section
- Transition Path Adjacent To Road Shoulder
- Class III Shared Use Path
- Retaining Wall - Wood or Concrete
- Bridge Abutment/Pier
- Earthen Bridge Approach Ramp
- Detail Reference
- New Culvert
- Existing Culvert
- New Bottomless Crossing (Arch Culvert or Footbridge)
- Potential Biological Mitigation Area (Public & SLO Conservancy Lands)
- Erosion Control
- Temporary Construction Staging Area
- Temporary Construction Access
- Traffic Barrier
- Limit of Construction Disturbance
- Split Rail Fence
- Security Fence
- T Post Fence (consistent with property owner negotiations)
- Property Line
- Creek Flowline

BOB JONES PATHWAY  
SAN LUIS OBISPO TO ONTARIO ROAD

**QUESTA**  
ENGINEERING CORP.  
Civil Environmental & Water Resources  
(510) 236-6114  
FAX (510) 236-2423  
questa@questaec.com  
P.O. Box 70356 1220 Brickyard Cove Road Point Richmond, CA 94807

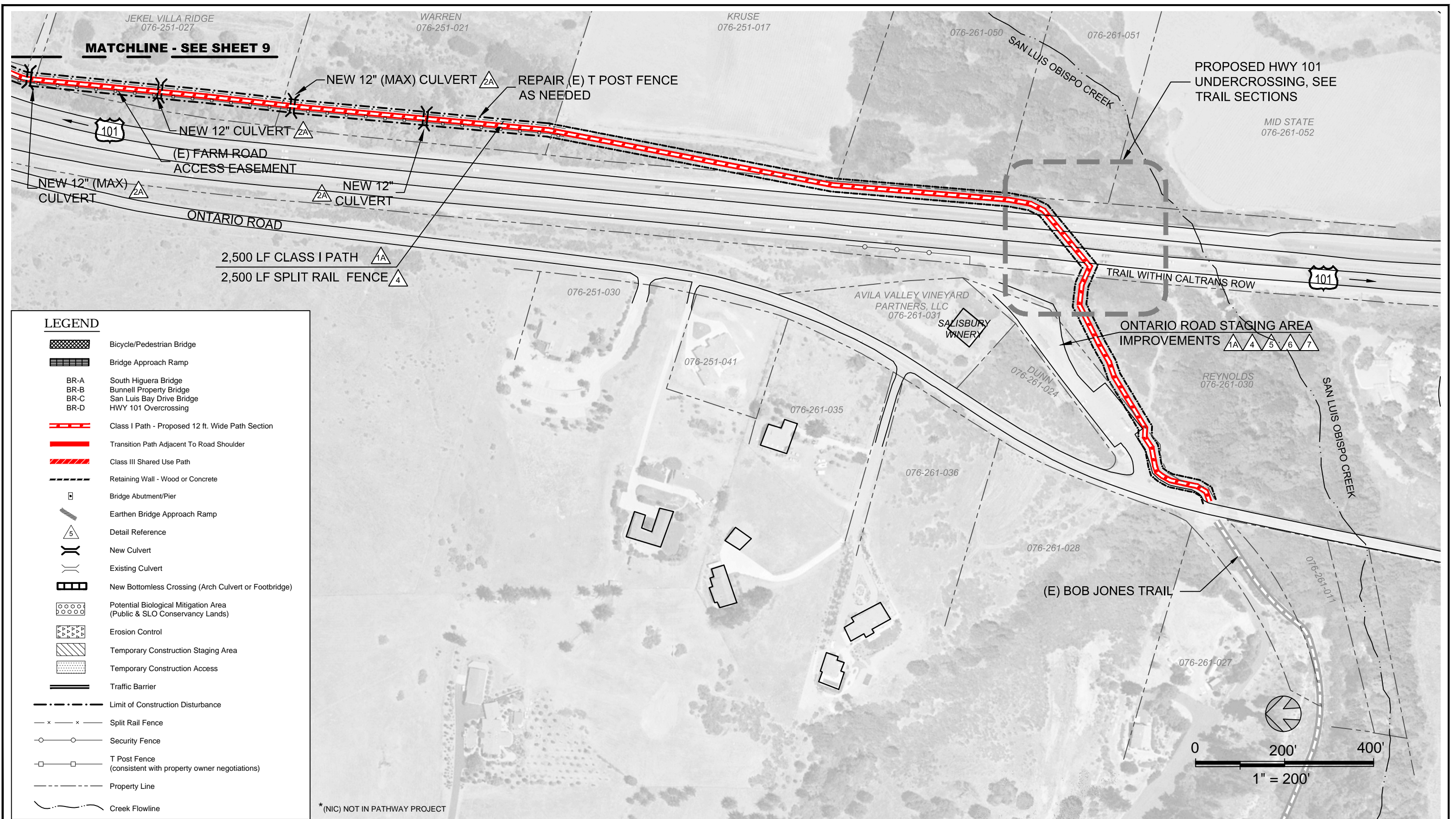


DESIGN	MH/JM
DRAWN	OR
CHECKED	JP
APPR'D	JP
DATE	9/28/15
PROJECT NUMBER	1300177

PRELIMINARY PLAN  
"EIR ALTERNATIVE"

SHEET  
8 of 13





- LEGEND**
- Bicycle/Pedestrian Bridge
  - Bridge Approach Ramp
  - BR-A South Higuera Bridge
  - BR-B Bunnell Property Bridge
  - BR-C San Luis Bay Drive Bridge
  - BR-D HWY 101 Overcrossing
  - Class I Path - Proposed 12 ft. Wide Path Section
  - Transition Path Adjacent To Road Shoulder
  - Class III Shared Use Path
  - Retaining Wall - Wood or Concrete
  - Bridge Abutment/Pier
  - Earthen Bridge Approach Ramp
  - Detail Reference
  - New Culvert
  - Existing Culvert
  - New Bottomless Crossing (Arch Culvert or Footbridge)
  - Potential Biological Mitigation Area (Public & SLO Conservancy Lands)
  - Erosion Control
  - Temporary Construction Staging Area
  - Temporary Construction Access
  - Traffic Barrier
  - Limit of Construction Disturbance
  - Split Rail Fence
  - Security Fence
  - T Post Fence (consistent with property owner negotiations)
  - Property Line
  - Creek Flowline

\*(NIC) NOT IN PATHWAY PROJECT

# BOB JONES PATHWAY SAN LUIS OBISPO TO ONTARIO ROAD

**QUESTA**  
ENGINEERING CORP.

Civil  
Environmental  
& Water Resources

(510) 236-6114  
FAX (510) 236-2423  
questa@questaec.com  
P.O. Box 70356 1220 Brickyard Cove Road Point Richmond, CA 94807



DESIGN	MH/JM
DRAWN	OR
CHECKED	JP
APPR'D	JP
DATE	9/28/15
PROJECT NUMBER	1300177

PRELIMINARY PLAN  
"EIR ALTERNATIVE"

SHEET

9 OF 13