

Part IV - THE PROGRAMMING PLAN DESIGN DRAWINGS

EL CHORRO REGIONAL PARK PROGRAMMING PLAN

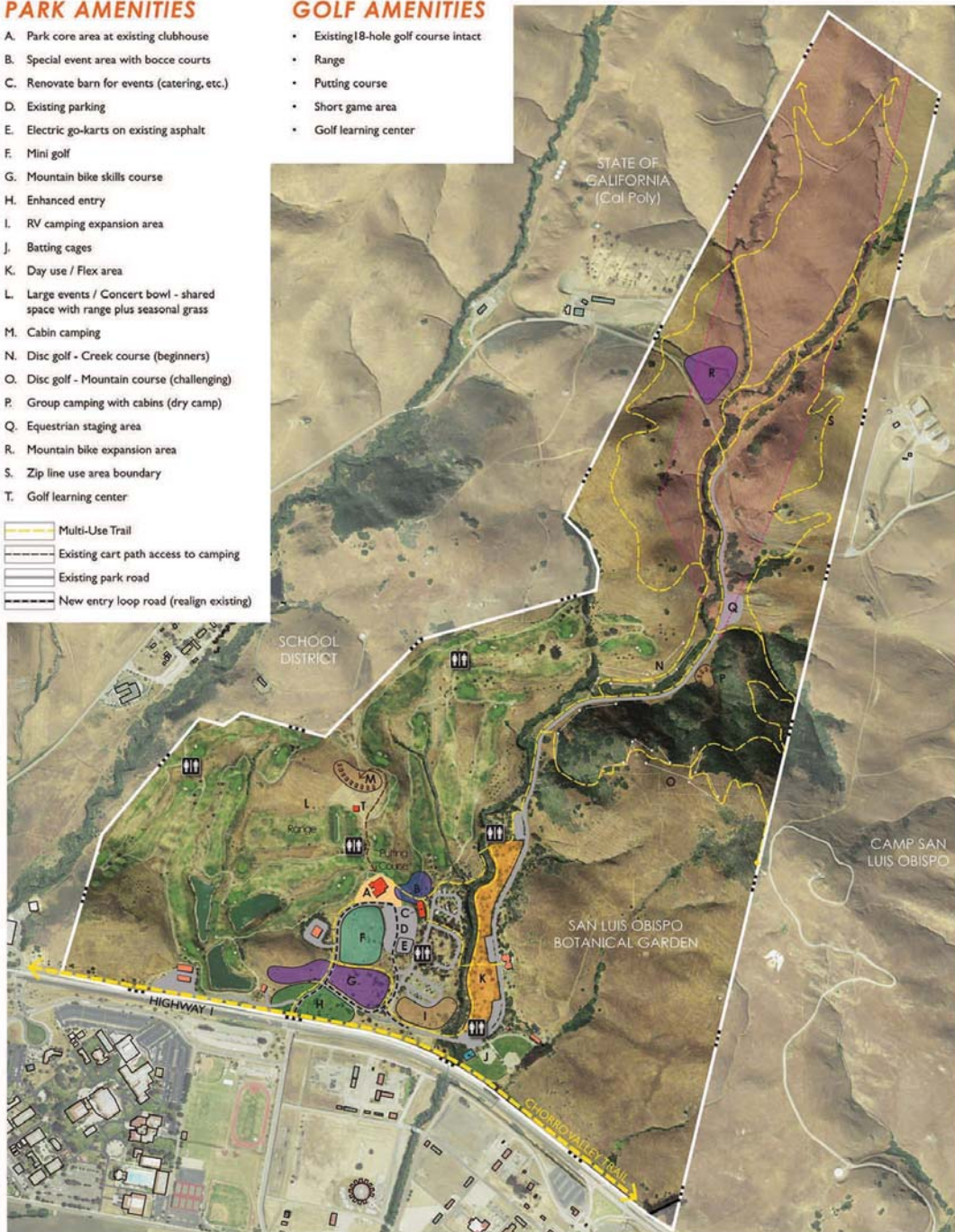
PARK AMENITIES

- A. Park core area at existing clubhouse
- B. Special event area with bocce courts
- C. Renovate barn for events (catering, etc.)
- D. Existing parking
- E. Electric go-karts on existing asphalt
- F. Mini golf
- G. Mountain bike skills course
- H. Enhanced entry
- I. RV camping expansion area
- J. Batting cages
- K. Day use / Flex area
- L. Large events / Concert bowl - shared space with range plus seasonal grass
- M. Cabin camping
- N. Disc golf - Creek course (beginners)
- O. Disc golf - Mountain course (challenging)
- P. Group camping with cabins (dry camp)
- Q. Equestrian staging area
- R. Mountain bike expansion area
- S. Zip line use area boundary
- T. Golf learning center

- Multi-Use Trail
- Existing cart path access to camping
- Existing park road
- New entry loop road (realign existing)

GOLF AMENITIES

- Existing 18-hole golf course intact
- Range
- Putting course
- Short game area
- Golf learning center



EL CHORRO REGIONAL PARK
PROGRAMMING PLAN: 250ac/ft SCENARIO (89ac IRRIGATED)
 SAN LUIS OBISPO, CA.

1" = 300' CONTOUR INTERVAL = 10'



rrm design group
 APRIL 21, 2017

EL CHORRO REGIONAL PARK PROGRAMMING PLAN

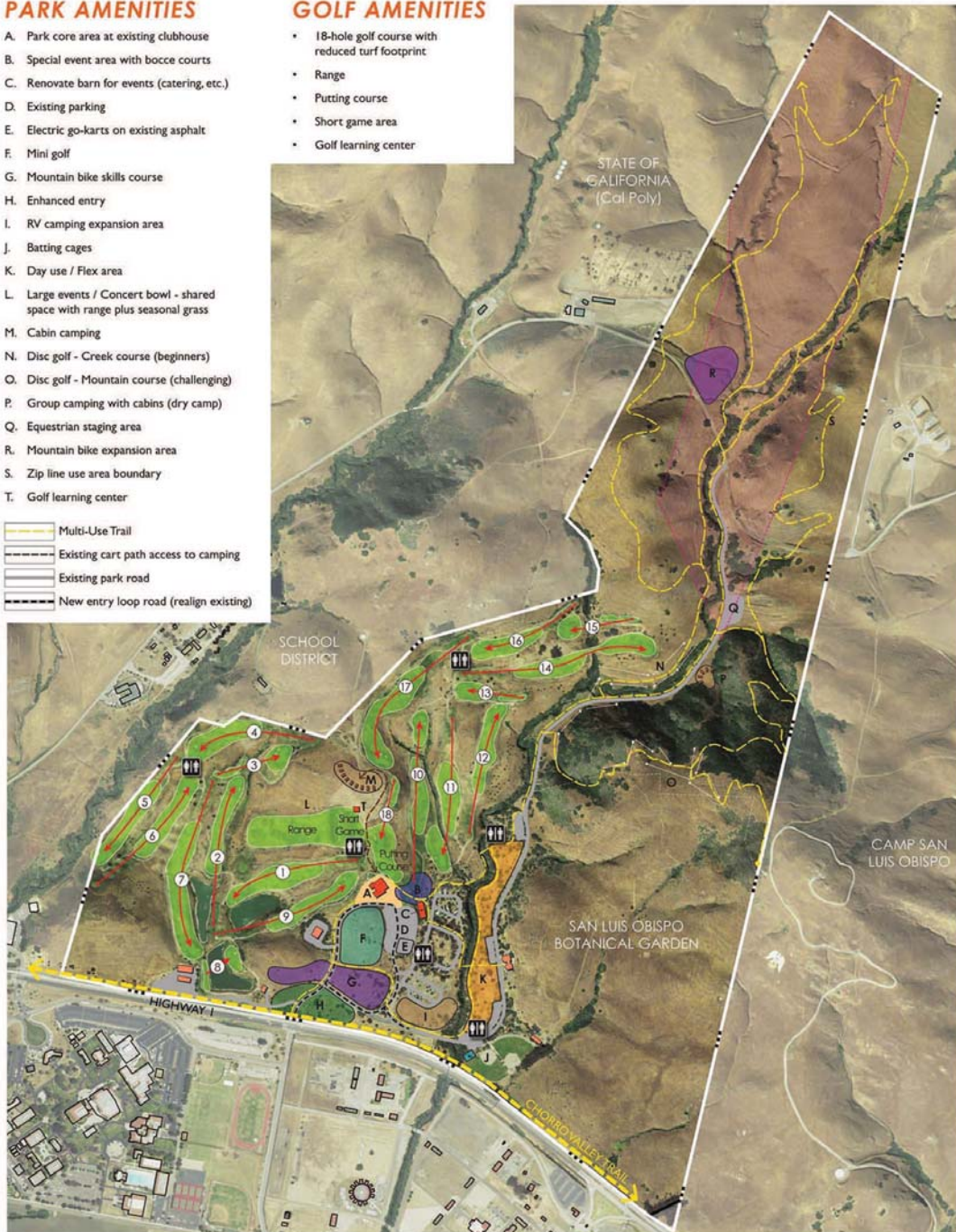
PARK AMENITIES

- A. Park core area at existing clubhouse
- B. Special event area with bocce courts
- C. Renovate barn for events (catering, etc.)
- D. Existing parking
- E. Electric go-karts on existing asphalt
- F. Mini golf
- G. Mountain bike skills course
- H. Enhanced entry
- I. RV camping expansion area
- J. Batting cages
- K. Day use / Flex area
- L. Large events / Concert bowl - shared space with range plus seasonal grass
- M. Cabin camping
- N. Disc golf - Creek course (beginners)
- O. Disc golf - Mountain course (challenging)
- P. Group camping with cabins (dry camp)
- Q. Equestrian staging area
- R. Mountain bike expansion area
- S. Zip line use area boundary
- T. Golf learning center

- Multi-Use Trail
- Existing cart path access to camping
- Existing park road
- New entry loop road (realign existing)

GOLF AMENITIES

- 18-hole golf course with reduced turf footprint
- Range
- Putting course
- Short game area
- Golf learning center



EL CHORRO REGIONAL PARK
PROGRAMMING PLAN: 160ac/ft SCENARIO (60ac IRRIGATED)
 SAN LUIS OBISPO, CA.

1" = 300' CONTOUR INTERVAL = 10'



APRIL 21, 2017

EL CHORRO REGIONAL PARK PROGRAMMING PLAN

PARK AMENITIES

- A. Park core area at existing clubhouse
- B. Special event area with bocce courts
- C. Renovate barn for events (catering, etc.)
- D. Existing parking
- E. Electric go-karts on existing asphalt
- F. Mini golf
- G. Mountain bike skills course
- H. Enhanced entry
- I. RV camping expansion area
- J. Batting cages
- K. Day use / Flex area
- L. Large events / Concert bowl - shared space with range plus seasonal grass
- M. Cabin camping
- N. Disc golf - Creek course (beginners)
- O. Disc golf - Mountain course (challenging)
- P. Group camping with cabins (dry camp)
- Q. Equestrian staging area
- R. Mountain bike expansion area
- S. Zip line use area boundary
- T. Golf learning center
- U. Tent camping
- V. Children's Play Area

- Multi-Use Trail
- Existing cart path access to camping
- Existing park road
- New entry loop road (realign existing)

GOLF AMENITIES

- 9-hole golf course, plus 5-hole practice course
- Relocated range
- Putting course
- Short game area
- Golf learning center



EL CHORRO REGIONAL PARK
PROGRAMMING PLAN: 120ac/7f SCENARIO (45ac IRRIGATED)
 SAN LUIS OBISPO, CA.

0 100 200 300
 1" = 300' CONTOUR INTERVAL = 10'



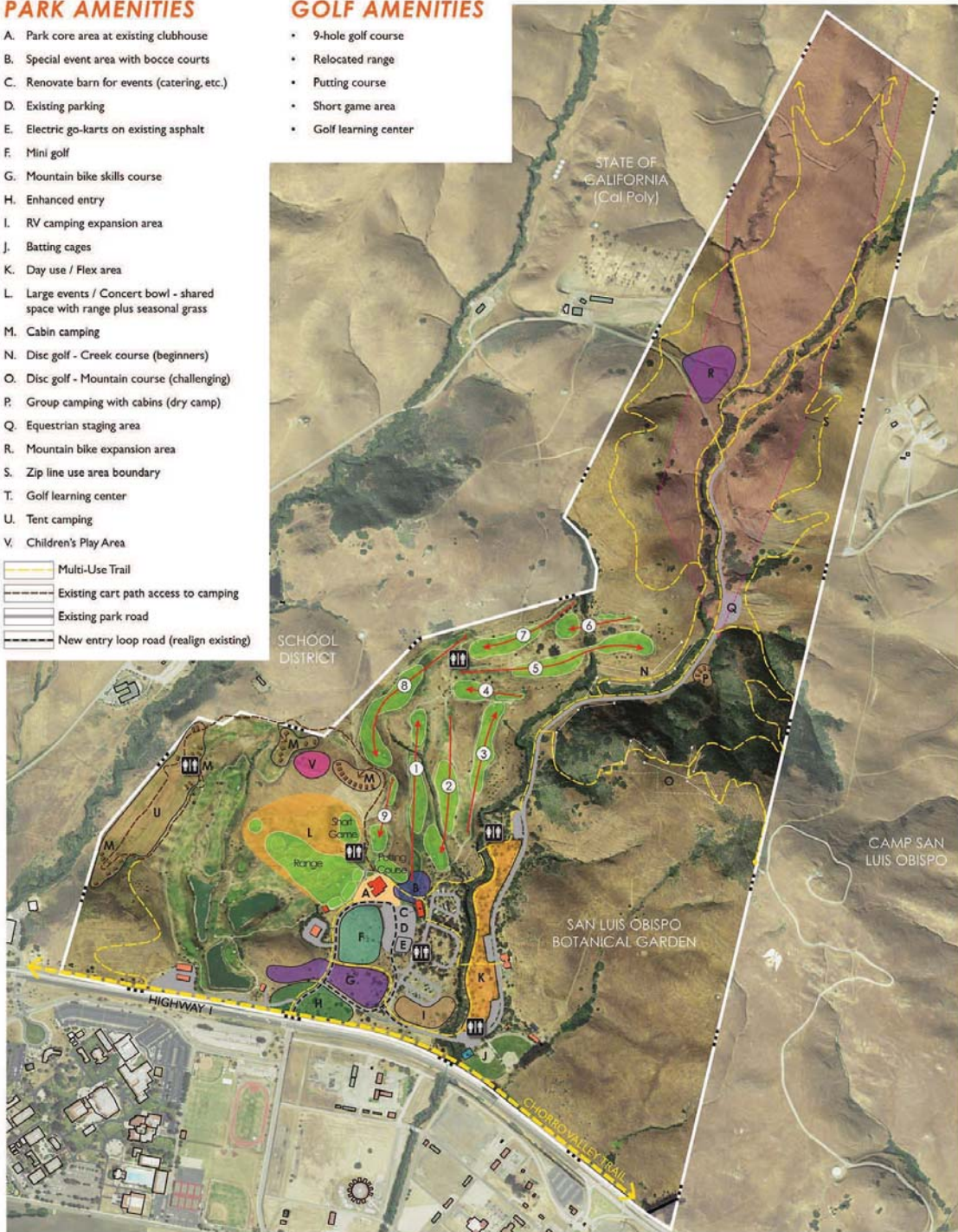
PARK AMENITIES

- A. Park core area at existing clubhouse
- B. Special event area with bocce courts
- C. Renovate barn for events (catering, etc.)
- D. Existing parking
- E. Electric go-karts on existing asphalt
- F. Mini golf
- G. Mountain bike skills course
- H. Enhanced entry
- I. RV camping expansion area
- J. Batting cages
- K. Day use / Flex area
- L. Large events / Concert bowl - shared space with range plus seasonal grass
- M. Cabin camping
- N. Disc golf - Creek course (beginners)
- O. Disc golf - Mountain course (challenging)
- P. Group camping with cabins (dry camp)
- Q. Equestrian staging area
- R. Mountain bike expansion area
- S. Zip line use area boundary
- T. Golf learning center
- U. Tent camping
- V. Children's Play Area

- Multi-Use Trail
- Existing cart path access to camping
- Existing park road
- New entry loop road (realign existing)

GOLF AMENITIES

- 9-hole golf course
- Relocated range
- Putting course
- Short game area
- Golf learning center



EL CHORRO REGIONAL PARK
PROGRAMMING PLAN: 100ac/ft SCENARIO (35ac IRRIGATED)
 SAN LUIS OBISPO, CA.

1" = 300' CONTOUR INTERVAL = 10'



rrm design group
 APRIL 21, 2017



EL CHORRO REGIONAL PARK PARK CORE CONCEPT PLAN SAN LUIS OBISPO, CA.

